

ORERA NO - RP/19/2024/01246
ORERA.GOV.IN

BDA APPROVED

LUXURY COUNTRYSIDE PLOTS

BY SURYO UDYOG LTD.



CHANDAKA



greenvillage

The Green Village is the inaugural real estate project by the Suryo Group, a venture rooted in legacy and emotion. This land has been an integral part of our family's journey for over four decades, cherished not as mere real estate but as a cornerstone of our memories. Chandaka Farm, for instance, was acquired the same year I was born, and its significance has grown with every passing year.

It is more than a real estate development; it's a vision to create a vibrant community. Here, you'll find a harmonious blend of urban convenience and rural serenity. Strategically located, it offers easy connectivity to the city while providing a peaceful retreat amidst nature.

Our philosophy has always been to lead with our hearts, despite advice to conduct business with only our minds. This approach stems from the values instilled by my father, who left a secure government job to build a diversified business empire driven by passion.

With this project, we invite you not as customers but as neighbors, to be a part of our vision of a nurturing and balanced life. Every decision is made with care, ensuring your peace of mind, as we pour our hearts into creating a true home.

"The best time to plant a tree was twenty years ago; the best time to build a house is when your heart is ready."

- Confucius

Amarendra Dash

Founder , Chairman
The Suryo Group

Aditya Dash

Managing Director
The Suryo Group



RARE. LIMITED SUPPLY. LIMITLESS POTENTIAL.

For generations, land has embraced just a few, but now it's carving a pathway for all of you.

With Green Village, the Suryo Group brings you a chance to own the oldest asset of mankind, Land. Clean, risk-free, without any red tape, free of hidden litigations, and inconvenient processes .

As an investment. As a home. As a mark of a legacy.

WITH THE PROMISE OF SURYO.



THE PROMISE OF WEALTH

Creating wealth has never been this simple and convenient as we make it accessible and desirable.



THE PROMISE OF QUALITY & TRANSPARENCY

We promise quality sewage solutions for Green Village, ensuring a clean and hygienic environment for your home and community.

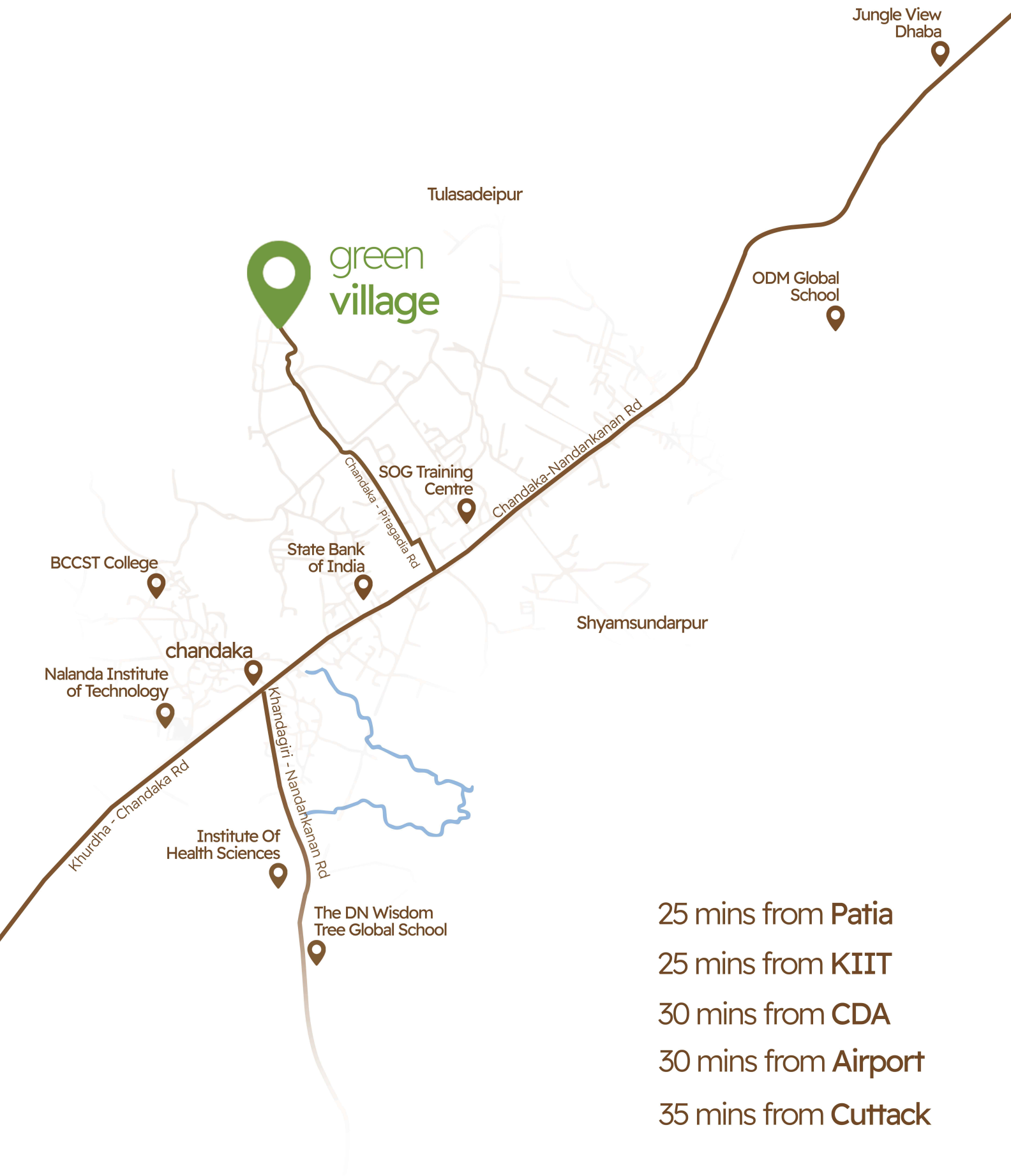




project
area

actual image of site

premium plots, prime location



25 mins from **Patia**

25 mins from **KIIT**

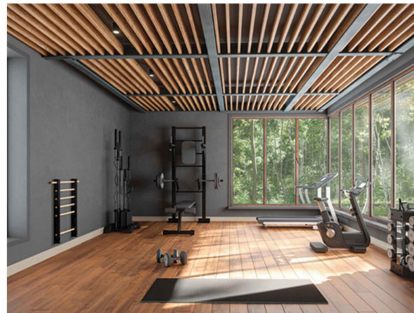
30 mins from **CDA**

30 mins from **Airport**

35 mins from **Cuttack**

everything you need and more...

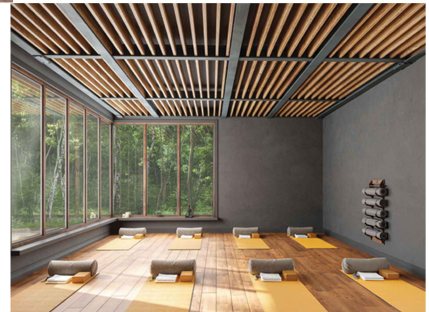
amenities



gym



swimming
pool



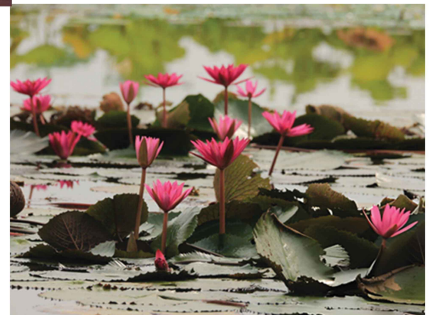
meditation
room



kids
play area



sound
healing room



lily
pond

*images are used solely for reference purposes



"Nature is our oldest neighbor; a house in her embrace is the truest dwelling of the heart."

- Emily Dickinson

Live The Green Life

This isn't just about claiming a plot of land; it's tied in with building a daily existence rich with meaningful moments and authentic experiences. It's about fresh air, green spaces, and the freedom to do exactly what fulfills you. It's about cultivating a life that aligns with your values. This is about more than just owning property; it's about crafting a life of intention, connection, and joy.

WELLNESS CENTRE

Get fit and empowered in our cutting edge center. Outfitted with the most recent wellness innovation, it's the ideal spot to accomplish your health objectives and feel your best.

SWIMMING POOL

Enjoy unadulterated joy. Experience a fortifying swim or loosen up on a bright evening in the midst of our shimmering pool and revive yourself from the sweltering intensity.

MEDITATION ROOM

See as your middle. Turn off yourself, and loosen up in this peacefulness occupied reflection room with which you will recover and associate with your self.

LILY POND

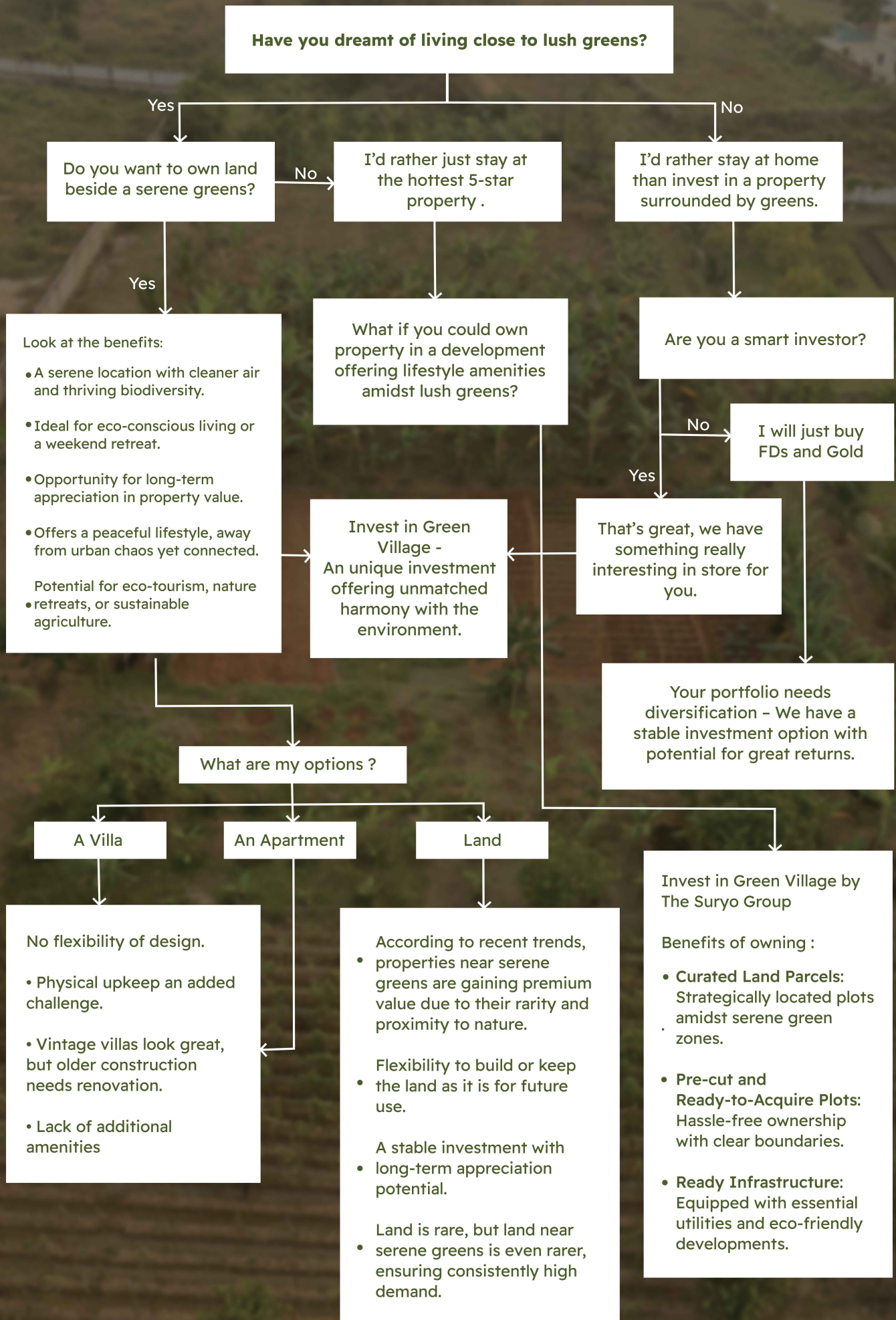
Lose yourself in tranquility. Our delightful lily pond, with its serene waters and beautiful blossoms, is an unspoiled spot to reflect and loosen up.

KIDS PLAY AREA

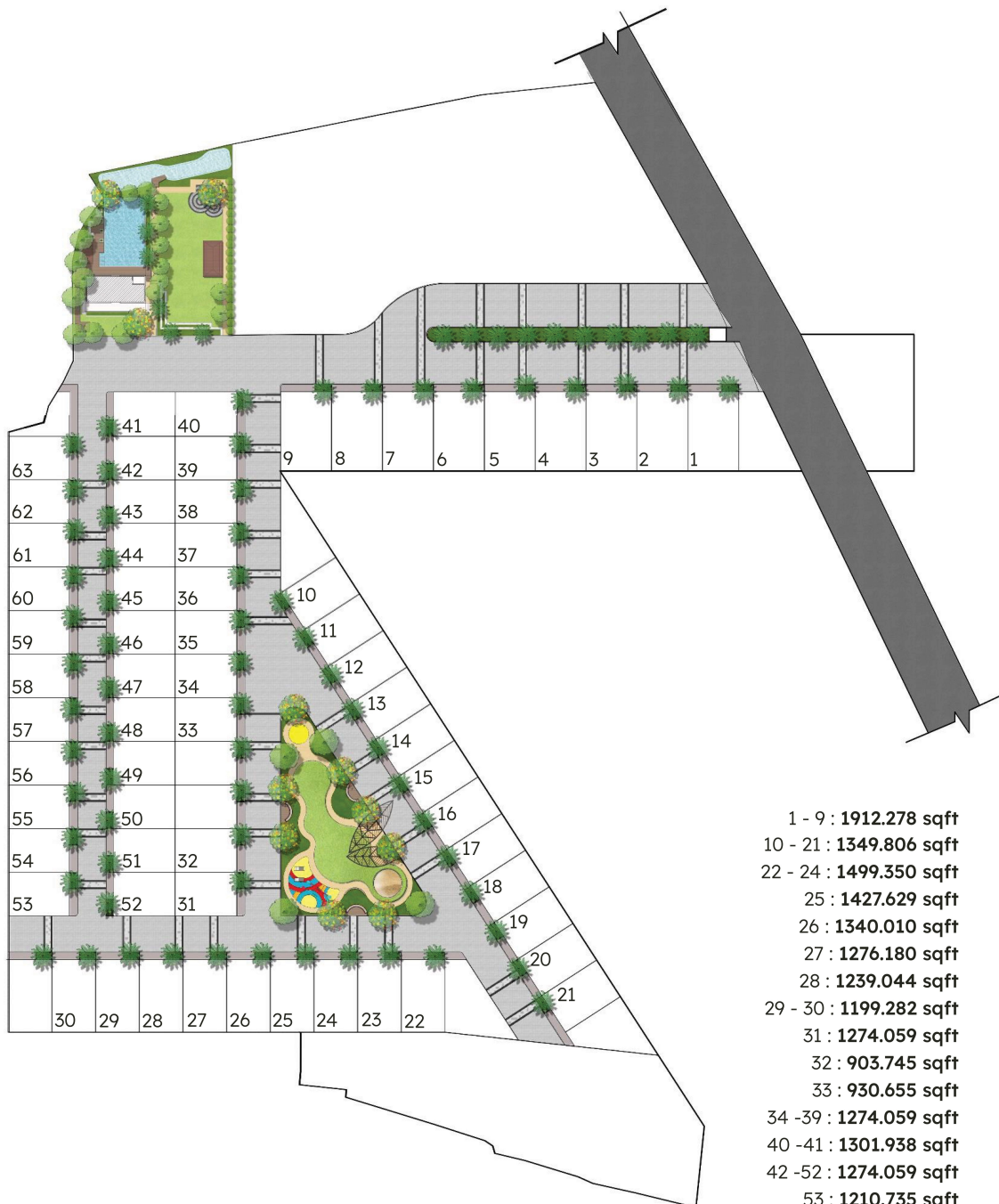
Where minds roam free. Our insightfully planned play region gives a protected and invigorating climate for youngsters to investigate, make, and gain experiences that will endure forever.

SOUND HEALING ROOM

Submerge yourself in the calming hints of our sound healing room, intended to advance profound unwinding, lessen pressure, and reestablish harmony to your brain, body, and soul..



project layout



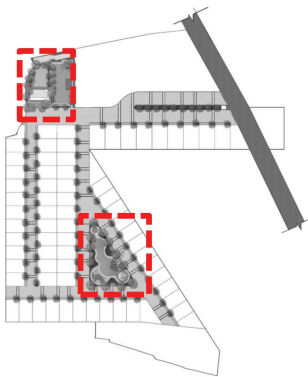
1 - 9 :	1912.278 sqft
10 - 21 :	1349.806 sqft
22 - 24 :	1499.350 sqft
25 :	1427.629 sqft
26 :	1340.010 sqft
27 :	1276.180 sqft
28 :	1239.044 sqft
29 - 30 :	1199.282 sqft
31 :	1274.059 sqft
32 :	903.745 sqft
33 :	930.655 sqft
34 - 39 :	1274.059 sqft
40 - 41 :	1301.938 sqft
42 - 52 :	1274.059 sqft
53 :	1210.735 sqft
54 :	1210.885 sqft
55 :	1447.112 sqft
56 :	1736.233 sqft
57 :	1999.521 sqft
58 :	2200.700 sqft
59 :	2293.378 sqft
60 :	2279.708 sqft
61 :	2195.103 sqft
62 :	2896.915 sqft
63 :	1371.441 sqft

landscape master plan

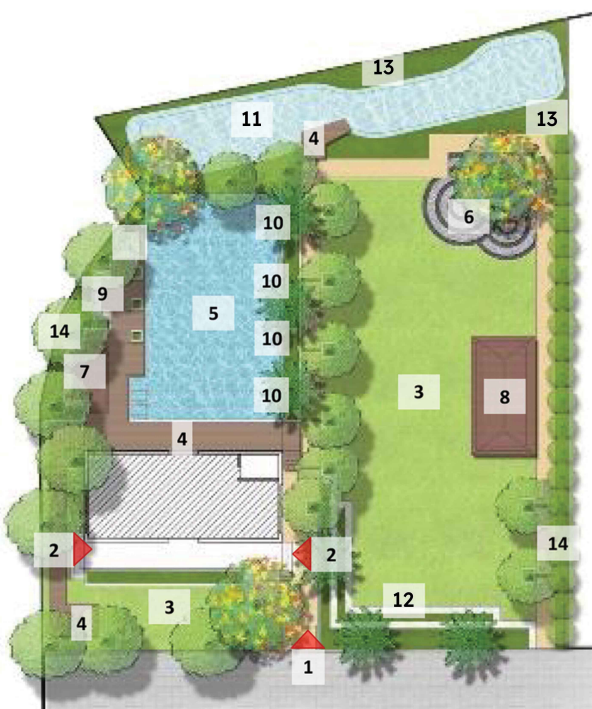
kids play zone



1. Entry with pergola
2. Walking loop
3. Rubberized kids play zone
4. Kids play lawn
5. Sand pit
6. Tot lot
7. Peripheral seating court
8. Dense forest



club area



1. Main Entry
2. Entry to the club
3. Lawn
4. Deck
5. Swimming pool
6. Reflexology
7. Pavilion
8. Deck with cabana
9. Seat
10. Water spout
11. Pond
12. Stepped Seating
13. Peripheral green

Landscape
Architect
Landscape
Architect

Play

Clubbing wall

"Be content with what you have; rejoice in the way things are. When your house is in the flow of nature, there is nothing left to achieve."

- Lao Tzu

Land has always been more than just a commodity; it's a tangible asset, a symbol of stability, and a source of enduring wealth. At Green Village, we believe in the power of land ownership to create a lasting legacy for you and your family.

GENERATIONAL WEALTH

Land appreciates over time, providing a secure foundation for your family's financial well-being for generations to come. Imagine passing down not just wealth, but a piece of pristine nature, a place where your descendants can build their dreams.

TANGIBLE ASSET

In an era of volatile markets and economic fluctuations, land offers a stable and tangible investment that holds its value. It's a safe haven, a piece of the earth that you can always rely on.

A LEGACY OF OPPORTUNITY

Green Village provides the canvas for your family's future. Whether your children choose to build their dream homes, develop the land further, or simply enjoy its natural beauty, the possibilities are endless. You're not just buying land; you're investing in their future opportunities.

PRESERVING NATURE'S BEAUTY

By investing in Green Village, you're contributing to the preservation of a pristine ecosystem. This is a gift to future generations, a chance to connect with nature and experience the tranquility that only untouched land can offer.

ASSET	2004	2024	CUMULATIVE APPRECIATION
SENSEX	5,500	68,000	1136%
FIXED DEPOSITS	₹1,00,000	₹3,50,000	250%
GOLD (10 gms - 24 Karat)	₹6,000	₹62,000	933%
Land in Bhubaneswar	₹100	₹3,000	2900%-3000% (Projected)

Data Sources: BSE Sensex - MoneyControl.com | Crypto Rates - Statista.com | FD Rates - Basis SBI Historical Base Rate in March 2021 | Gold Prices - MoneyControl.com
Bhubaneswar Land Area Ref: Patia

Disclaimer: The content of this brochure is for general information purposes only. While enough care is taken by Suryo Group to ensure that the information in the brochure is up-to-date, accurate, and correct, readers are requested to make their independent inquiry before relying upon it.



greenvillage

SURYO UDYOG LTD.

Site Address:

Chandaka and Tulasadeipur, Near SOG Training Centre,
Chandaka, Bhubaneswar - 751024

Corporate Office Address:

Dinalipi Bhawan, A-54/1 & A-55/1, Nayapalli, Baramunda,
Bhubaneswar-751 003, Odisha, India

Mob:

+91-9938161314 | 9337415899 | 8637266232

contact@suryo.in