



All our lives are blessed by the blissful presence
of the five basic elements that constitute our
beautiful cosmos.



EARTH



WATER



FIRE



SKY



AIR

Fire

It represents the energy of transformation. Fire is considered the most potent element as it can destroy and create.

Water

It represents the energy of fluidity. It is the most vital element of life for the survival of all living beings.

Earth

It represents the energy of stability. Earth is responsible for providing a stable and supportive environment for all living beings.

Sky

It represents the energy of space. Ether is the most subtle element as it is present everywhere, but it cannot be seen or touched.

Air

It represents motion's energy. It is the most vital element for life as it carries the oxygen necessary for all living beings' survival.



Cuttack

Gopalpur

Naraj

Mundali

Mahanadi River

Trisulia

Urali

Nandankanan
Zoological Park

Barang

Raghunathpurjali

Phulnakhara

Falcon Residency

Patia

Pahala

Chandra Sekharpur

Jagannathpur

Gothapatna

Falcon Crest

NH-16

Cuttack/Kolkata

Vizag/Chennai

Asureswar

Kesora

Khandagiri

Falcon Tatva

Lingaraj Temple

Badaraghunathpur

Janla

Uttara



DISTANCE CHART

SAI International School	13 km	(23 mins)
Janpath	11 km	(18 mins)
KIIT University	14 km	(25 mins)
Railway Station	11 km	(18 mins)
AIIMS, BBSR	5.9 km	(13 mins)
AMRI Hospital	3.7 km	(9 mins)
BBSR Airport	6.2 km	(15 mins)

Map not to scale
Approximate Distance



**Four G+17 towers spread
across 3.92* acres**

**Pollution free living
amidst greenery**

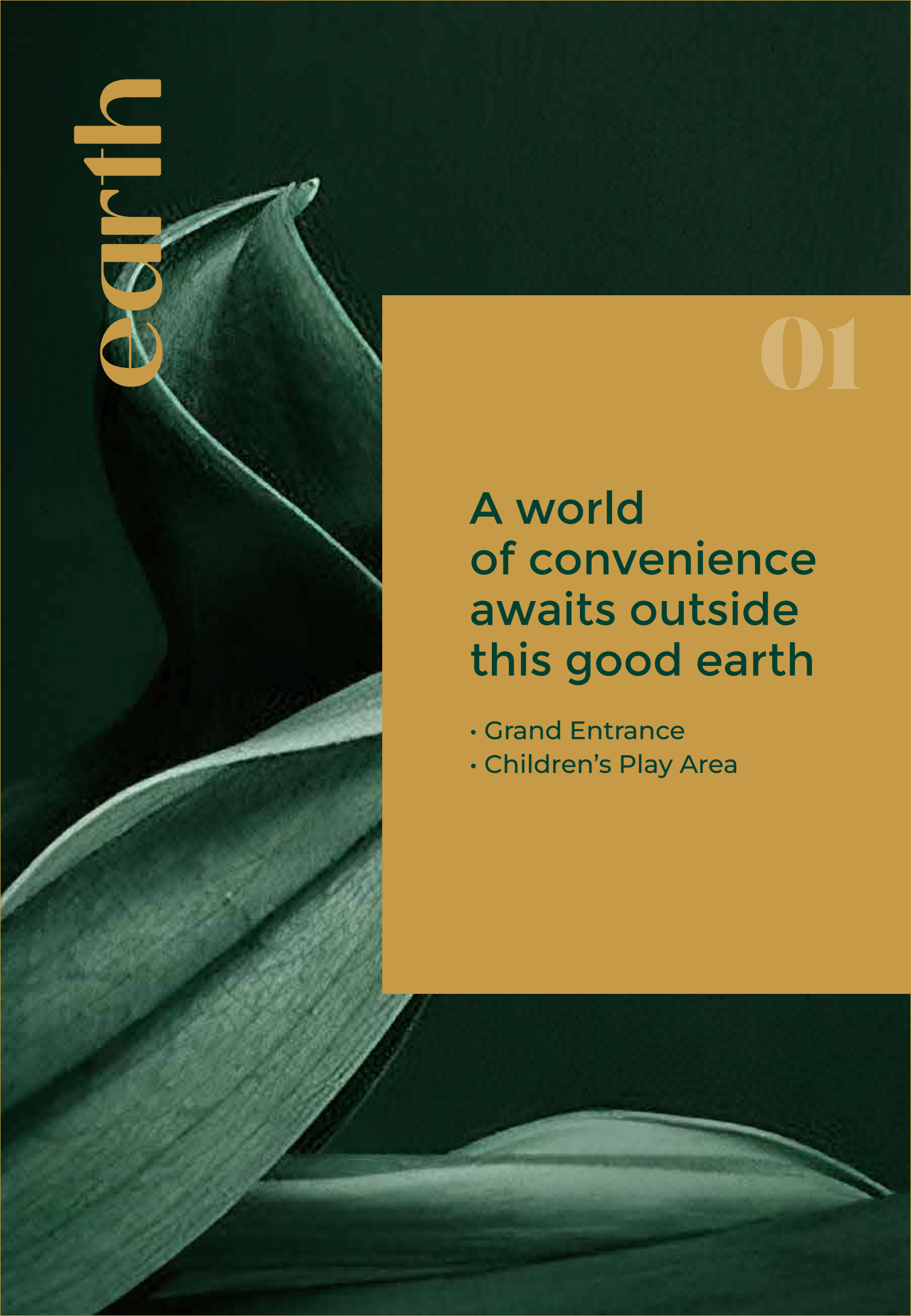
**An array of lifestyle
amenities**

**Vibrant outdoor spaces dotted
with innovative sculptures**

**Separate Club complex
with luxurious offerings**

FALCON
tativa





earth

01

A world
of convenience
awaits outside
this good earth

- Grand Entrance
- Children's Play Area



Make a red carpet entry

Main Entrance View





The art of fine living

Night View





where childhood is
boundless

Kids' Play Area





water

02

Let days flow
like water
in company
of green artistry

- Fountain View
- Infinity Swimming Pool
at Club roof top



Where Green meets Blue

Fountain View





Plush Fountain Arena

Drop-off Area





When the Blues Beckon

Infinity Swimming Pool





fire

03

Let your hair down at the classy & elegant Club

- Club House
- Banquet Lobby
- Modern Gymnasium
- Spa Room



PANCHVATI

C L U B

Club House





Celebrate the grandeur of life

Banquet Lobby





For those
who work hard

Modern Gymnasium





Rejuvenate and Rewind

Spa Room





Live the highs of life

Club with Elevation View





sky

04

Sublime offerings to meet your sky-high expectations

- Tennis Court at Club Rooftop
- Swimming Pool
- Open Kitchen
- Rooftop Yoga Zone
- Organic Farming Bays
- Rooftop Relaxology Garden
- Chit Chat Area
- Lounge Area



Sports Floor
With Nets

Informal Seating
With Projection

Tennis
Court

Landscaped
Connected Terrace

Open Gym With
Sports Flooring

Open
Kitchen

Covered
Deck

Rooftop
Yoga Zone

Organic
Farming Bays

Rooftop
Relaxology Garden

Open
Lawn

Chit Chat
Zone

Lounge
Area

Amphitheatre
Seating

Open to Sky
Lounge Area



To endless conversations

Night Terrace View





Breathe the serenity of nature

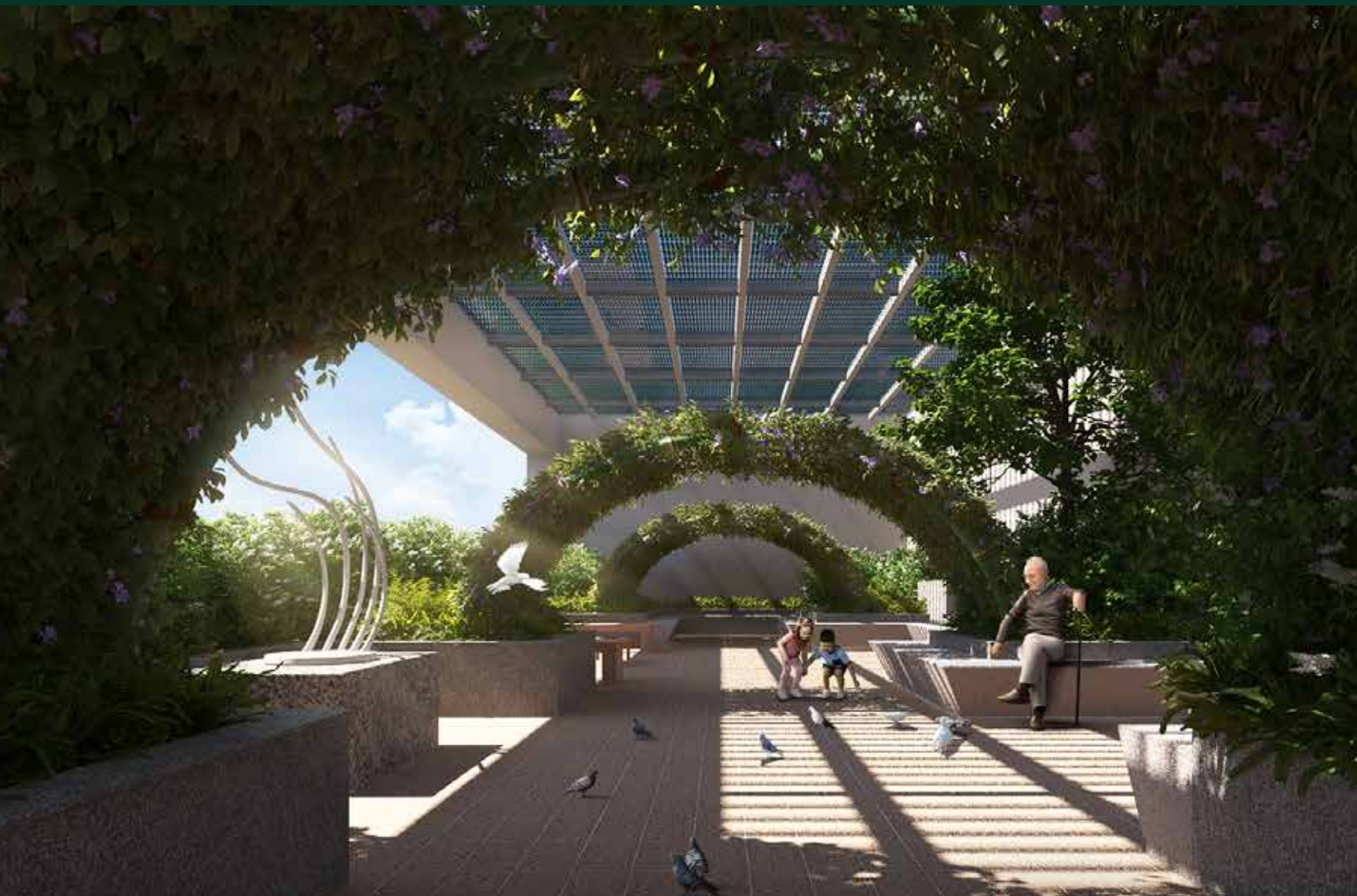
Covered Relaxology Garden





Homes with a Bougainvillea View

Terrace Bougainvillea View



Step inside the swish interiors with an air of pride

- Entrance Lobby
- Lift Lobby
- Study Room
- Living Dining Area
- Large Wide Balconies



Make a mark as you step in

Entrance Lobby





Architecture that leaves you in awe

Lift Lobby





Bedroom with orchid view

Bedroom





Air-conditioned homes

Living Dining Area



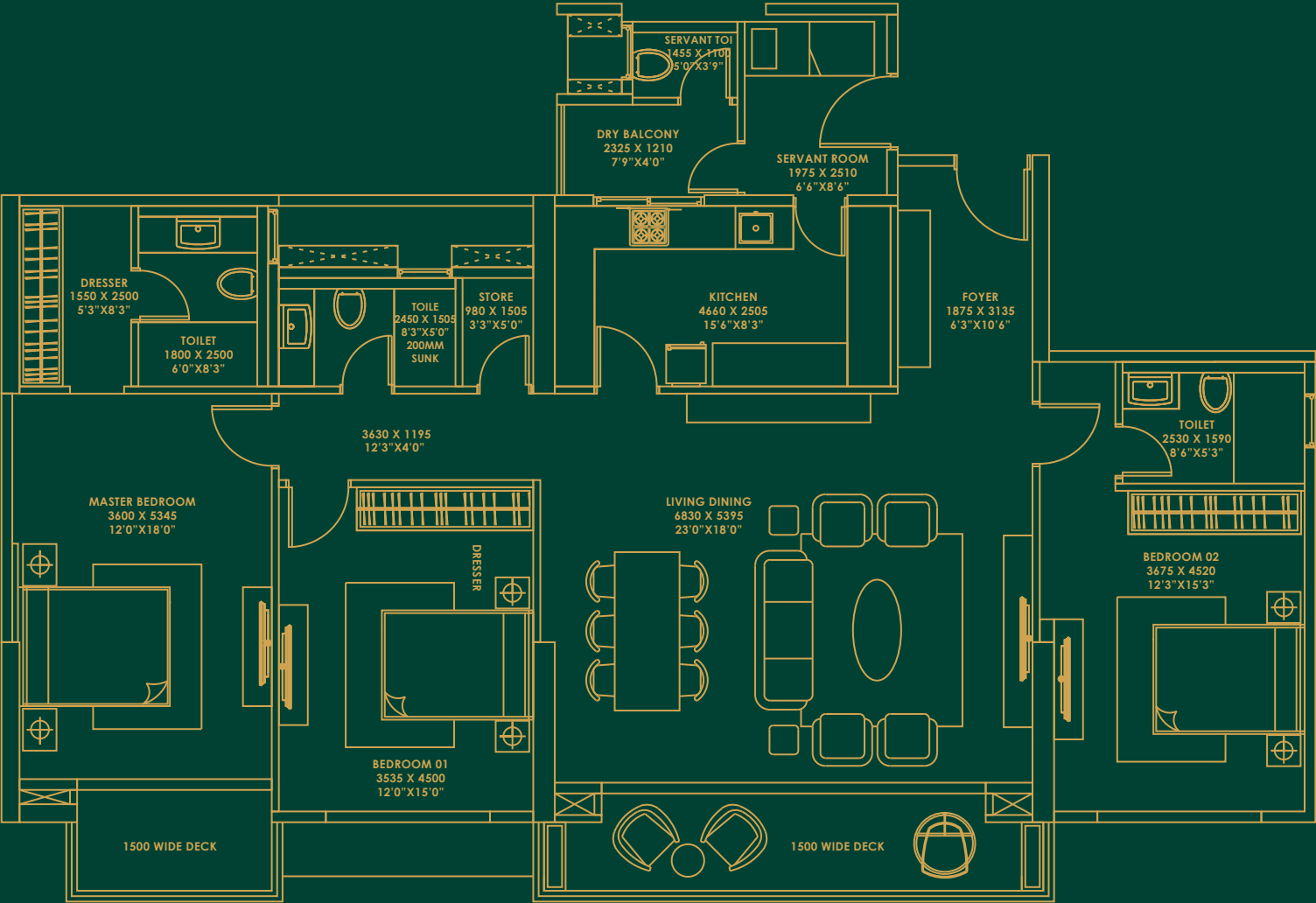
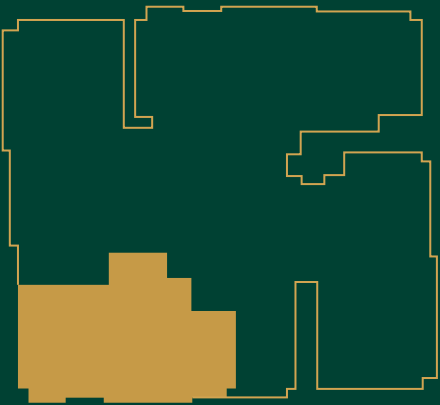


Aerial View





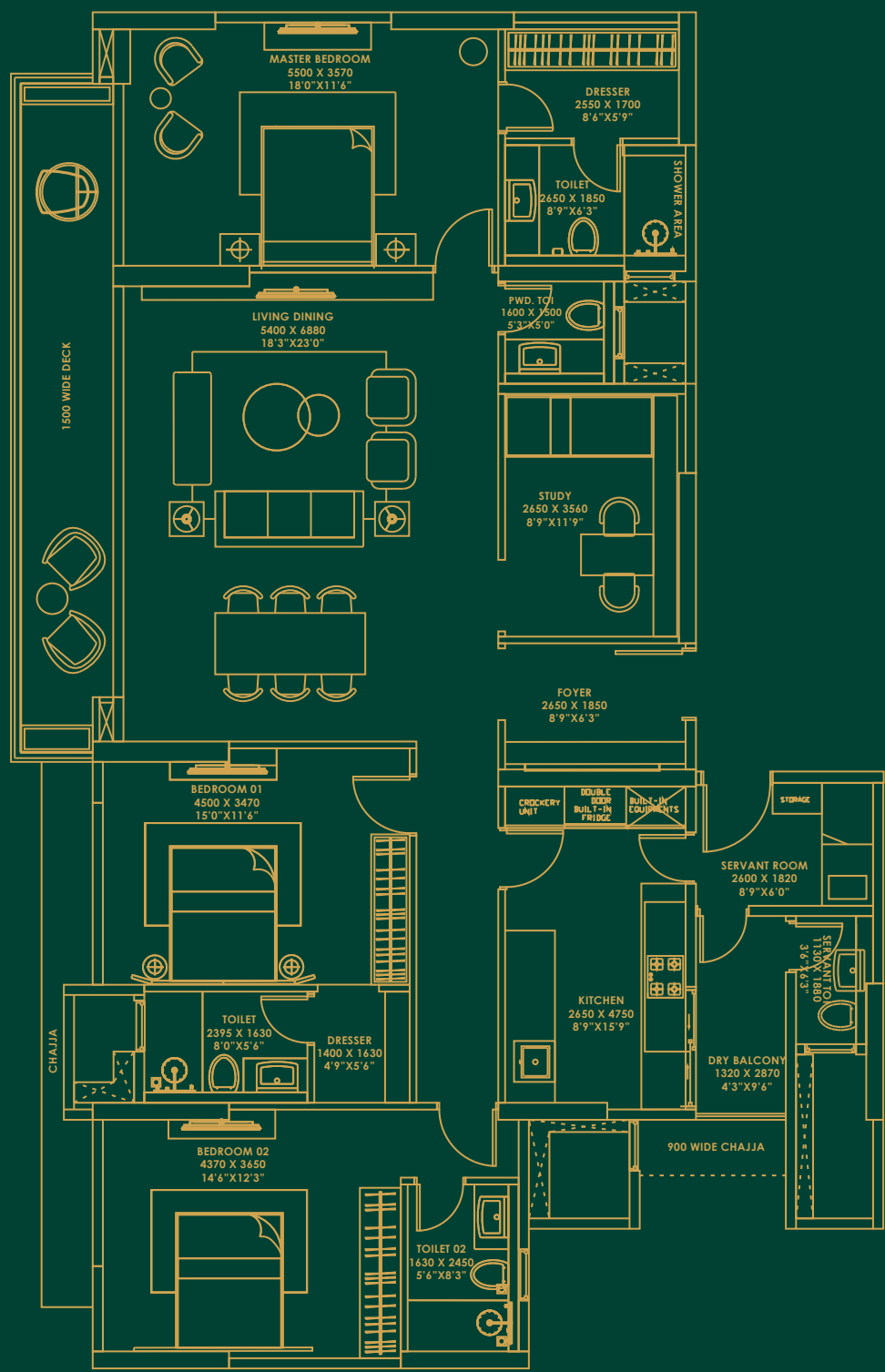
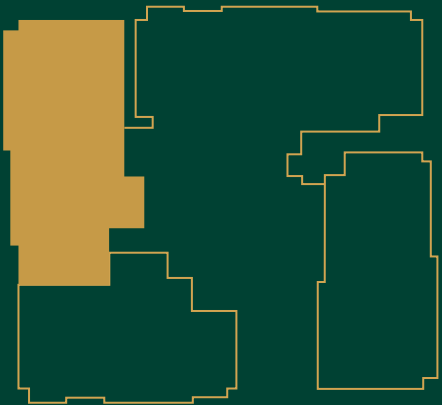
Unit Plan A



Apartment		Carpet Area	Balcony/Deck Area	SBU Area
Type	Configuration	Sq.mt.*/Sq.ft.	Sq.mt.*/Sq.ft.	Sq.mt.*/Sq.ft.
Type A (Series 04)	3 BHK + Svt. Room	141.90/1527	17.59/189	219.12/2355

*1 Sq.mt. = 10.764 Sq.ft.(approx)

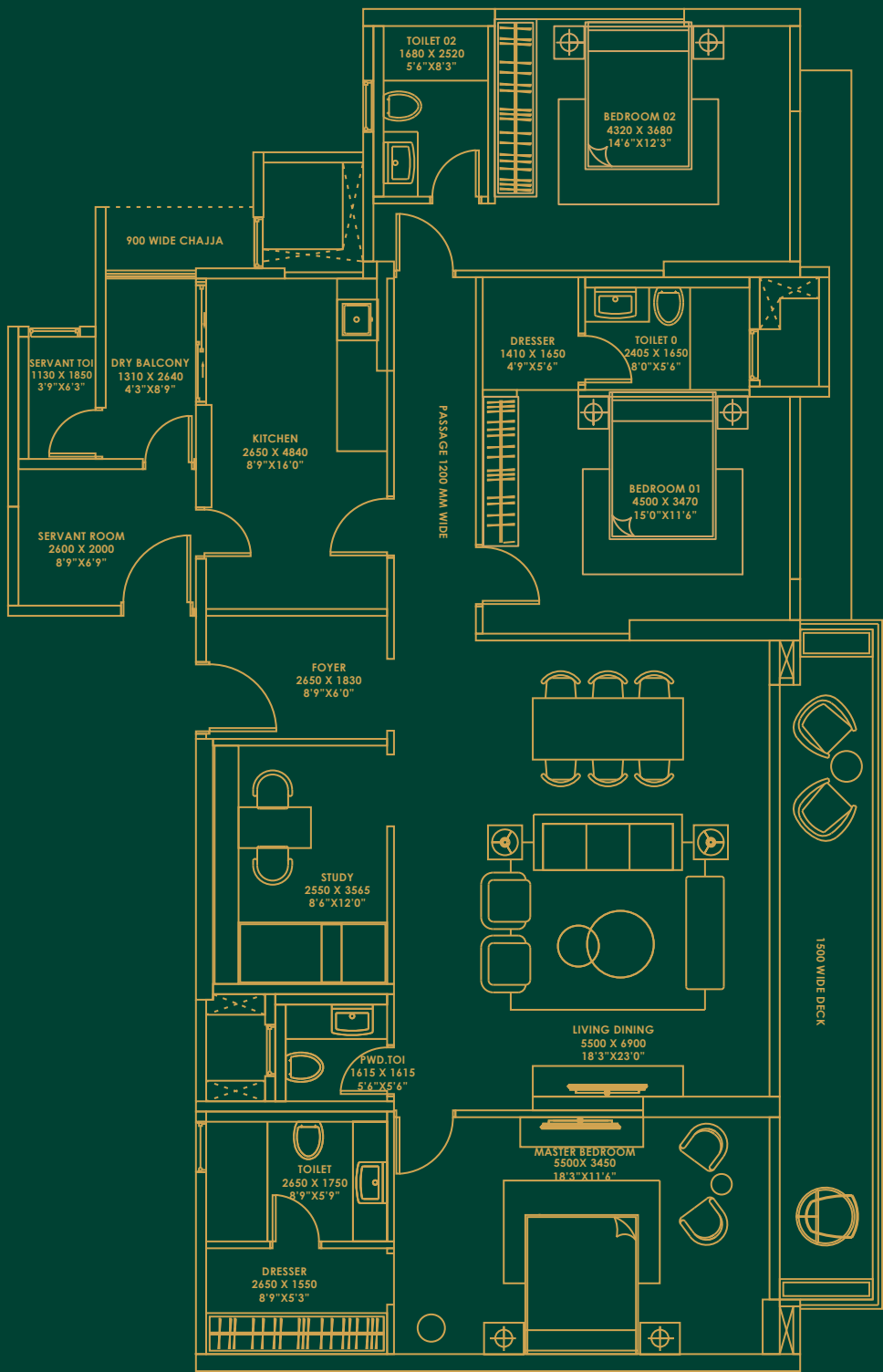
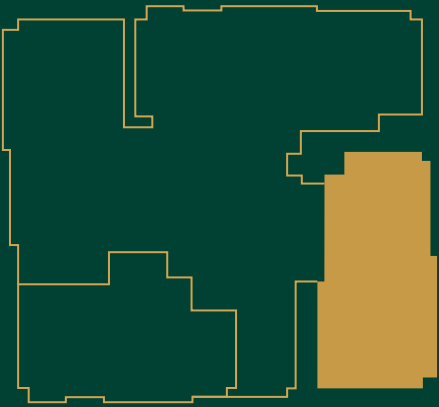
Unit Plan B



Apartment		Carpet Area	Balcony/Deck Area	SBU Area
Type	Configuration	Sq.mt.*/Sq.ft.	Sq.mt.*/Sq.ft.	Sq.mt.*/Sq.ft.
Type B (Series 01)	3.5 BHK + Svt. Room	158.60/1707	18.81/202	244.90/2632

*1 Sq.mt. = 10.764 Sq.ft.(approx)

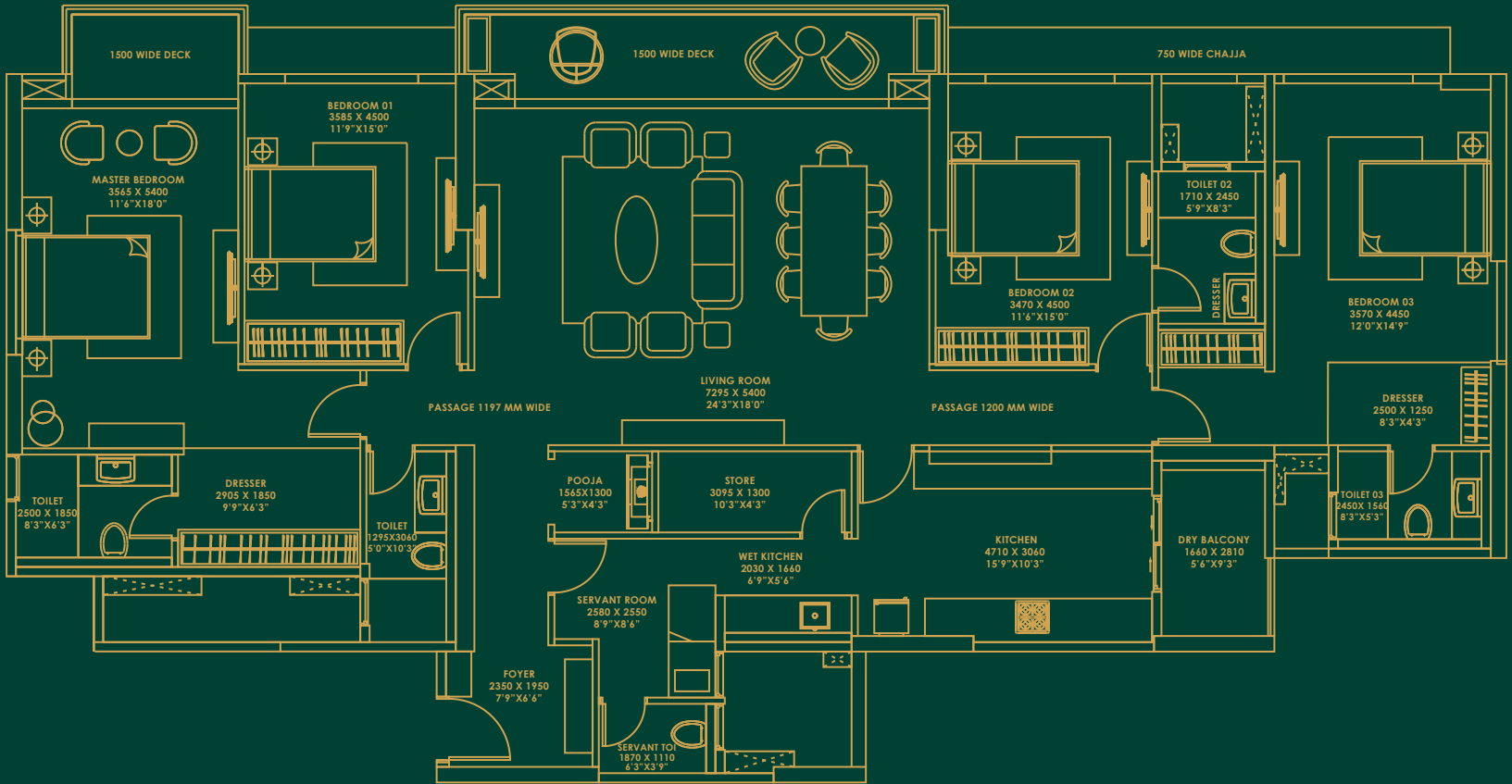
Unit Plan C



Apartment		Carpet Area	Balcony/Deck Area	SBU Area
Type	Configuration	Sq.mt.*/Sq.ft.	Sq.mt.*/Sq.ft.	Sq.mt.*/Sq.ft.
Type C (Series 03)	3.5 BHK + Svt. Room	158.97/1711	18.47/199	245.47/2639

*1 Sq.mt. = 10.764 Sq.ft.(approx)

Unit Plan D



Apartment		Carpets Area	Balcony/Deck Area	SBU Area
Type	Configuration	Sq.mt.*/Sq.ft.	Sq.mt.*/Sq.ft.	Sq.mt.*/Sq.ft.
Type D (Series 02)	4 BHK + Svt. Room	193.08/2078	20.26/218	298.15/3205

*1 Sq.mt. = 10.764 Sq.ft.(approx)

Project Master Plan



Artistic Image

LEGEND

1. Complex Main Gate
2. Security Room
3. Pathway
4. Service Area
5. Water Body
6. Emergency & Recovery Room
7. Convenience Store
8. Children's Play Area
9. Semi Open Chit-Chat Area
10. Semi Open Kids' Play Area
11. Car Charging Point
12. Pets' Play Area/Pet Park
13. Lawn/Garden Surroundings
14. Paved RG
15. Library/Reading Lounge
16. Multi-purpose Hall
17. Visitor's Parking
18. Entrance Lobby
19. LV & CCTV Room
20. Tennis Court
21. Swimming Pool

Terrace

Site Plan



LEGEND

1. Lounge Area
2. Relaxology Garden
3. Organic Farming
4. Lawn
5. Potted Plants
6. Amphitheatre
7. Yoga Zone
8. Covered Deck with Seating
9. Glass Box
10. Bar Area
11. Open Kitchen
12. Open Gym
13. Seating with Board Games
14. Chit-Chat Area
15. Informal Seating with Projection
16. Sports Area
17. Tennis Court
18. Swimming Pool

About The Developer



Setting global standards

The journey of a thousand miles begins with a single step. What spawned off from Odisha as a humble seedling way back in 1985 has since traversed the globe to become one of the nation’s leading seafood exporters.

Founded by Mr. Tara Ranjan Patnaik and supported by his brother, Mr. Prava Ranjan Patnaik, the Falcon Group is built on the foundation laid by Falcon Marine Exports Ltd.

In the decades since, the Group has experienced extraordinary growth, entering and excelling in the fields of Aqua feeds, Retail, Agro-Processing, and Real Estate, with Mr. Parthajeet Patnaik at the helm of its diversification activities. Through its commitment to corporate excellence and transparency, the Falcon Group has achieved sustained success and has become a major player in the industries in which it operates.

Falcon Group has seen impressive growth over the decades, allowing them to reach INR 2800 crores by 2022-23. The group has over 5000 employees and positively impacted the livelihood of over 10000 aquaculture farmers in many coastal states of India. Striving to further expand, the Falcon Group has set its sights on diversifying its operations into other sunrise sectors.



Falcon Real Estate is a revered player in residential and commercial projects in Odisha. Our mission is to create global standards of housing projects for an unparalleled living experience by providing our customers with quality housing and commercial projects, superior customer support and services, while meeting our responsibility towards society and our environment, with an existing land bank of roughly 500 acres, gives us the capacity to create millions of square feet of living space in the years to come.

Past Projects



Falcon Crest



Falcon Residency

Architects



KNS Architects, a multi-disciplinary, national & international award-winning design firm, was established with an objective of creating contextual, artistic & bespoke design solutions. They believe in looking at each project with a fresh, new perspective, a fact that finds resonance in their belief in creating vibrant, out-of-the-box solutions that strike the right note between practicality and aesthetic; constraints and aspirations.

KNS Architects has received various National & International awards such as 'International Design & Architecture Award (London), Icons of Spaces award by Berg Singapore, IIID Award, AICA Award, ArchiDesign Award, Kohler Abaraxus, Grohe NDTV Award, Ace of Space, Tade Awards, VM&RD Awards etc; and wide media coverage in various national and international magazine and coffee table books worldwide.

Consultants	Role in Project
KNS Architects	Principal Architect
Epicon	Structural Consultant
Designtree	Services Consultant
Humane	Landscape Consultant
Khaitan & Co	Title & Documentation
Amace	Cost Consultant
Mayabious	Creative & Media

Specifications

PARTICULAR	SPECIFICATION	BRAND
Structure	Earthquake Resistant RCC frame Structure	SAIL/TATA Steel or Equivalent
Exclusive Features	Air-Conditioned Apartments Home Lighting Automation (wireless)	Mitsubishi/Daikin or Equivalent Milanity or Equivalent
Apartment Flooring		
Entrance Foyer, Living & Dining Master Berdroom Study & Other Bedrooms Kitchen Servant Room Balcony	Italian Marble or Equivalent Laminated Wooden Flooring Glazed Vitrified Tiles Anit-Skid Vitrified Tiles Vitrified Tiles Anit-Skid Ceramic Tiles	Welspun or Equivalent Premium Brand Premium Brand Premium Brand Premium Brand
Doors, Frames & Hardware	Premium Veneer / Laminated Flush Doors SS Butt Hinges & Hardware	Factory Finished Pre Engineered Premium Brand
Locks	Digital Lock on Main door	dormakaba/Yale or Equivqlent
Glass Partition /Balcony Handrail	Stainless Steel Grading 304 Railing with Glass MS Railing in Utility & Staircases	St.Gobain/Modiguard or Equivalent
Windows	Anodized / Powder Coated System Window Space Provision for Safety Grills	Alumil/Tostem or Equivalent
Kitchen	Engineered Stone /Granite Cooking Platform SS Sink with Drain Board Provision for Modular Kitchen Provision for Electrical Chimney Ceramic Tiles Dado 2' Height above the counter Electrical points for Refrigerator, Water Purifier, Microwave, Exhaust Fan, Grinder etc.	Franke/Nirali or Equivalent

Cont...

PARTICULAR	SPECIFICATION	BRAND
Toilets	Anti-Skid Ceramic Floor Tiles Cermaic Wall Tiles Sanitary Fixtures CP Fittings Glass Partition in Master Toilet	Premium Brand Premium Brand Kohler / Grohe or Equivalent Kohler / Grohe or Equivalent
Walls	Internal Walls - Branded Putty Internal Walls - Premium Emulsion Paint External Walls - Textured Paint/Weatrher Coat Paint/Stone Cladding in selected area as per architect design	Birla / JK or Equivalent
Electrical Fitiings	Copper Wiring in Concealed Conduit with provision for Light Points, AC, TV & Telephone Premium Modular Switches, Sockets & Switchgear	Polycab / Finolex Cable or Equivalent Legrand / Norisys or Equivalent
Security Systems	Security Booth with Boom Barrier 24/7 Video Surveillance & CCTV Systems	
Common Areas Flooring Entance Lobby	Flooring & Lift wall cladding in Italian / Imported Marble	
Staircase	Polished Granite / Stone	
Terrace	Anti-Skid Ceramic exterior Tiles / Granite / Artificial Turf	
Other Featrures	Aesthetic Elevation High Speed Modern Elevators	Mitsubishi / Schindler or Equivalent



The art of fine living

Elevation View





FALCON REAL ESTATE PVT LTD

Corporate

A/22 Falcon House
1st Floor, Cuttack Road
Bhubaneswar 751006
Odisha

Project

Plot No 496/4145
Dumduma
Khandgiri
Bhubaneswar 751019

Phone

+91 674 2571976
7978 67 77 41
7437 00 88 00

E-Mail: info@falconrealestate.in **Website:** www.falconrealestate.in

RERA Reg. No: RP/19/2023/00922 dated 11/05/2023

RERA Authority Website: www.rera.odisha.gov.in

DISCLAIMER

All plans, specifications, artistic renderings are shown in the brochure are only indicative and are subject to change as may be decided by the company or directed by any competent authority in the best interests of the development. Soft furnishing, furniture, and gadgets do not form a part of the offering.

This document is conceptual and not a legal offering by the company and is to be used for general information only. Any interested party should verify all the information including designs, plans, specifications, facilities, features, payment schedules, terms of sales, etc. independently with the company prior to concluding any decision for buying apartment in any of the towers. The user of the brochure confirms that they have not solely relied on this information for making any booking/purchase in any of the towers. Nothing on the brochure should be misconstrued as advertising, marketing, booking, selling, or an offer for sale or invitation to purchase a unit in any project by the company.

Nothing contained herein intends to constitute a legal offering on the company's part. Information herein may contain technical inaccuracies or typographical errors. All images are merely artistic conceptualization and should not be relied upon as definitive reference. Falcon Tatva is registered with Odisha Real Estate Regulatory Authority vide project Registration Number RP/19/2023/00922 dated 11/05/2023 and is being developed, constructed and marketed by Falcon Real Estate Private Limited.