

Archid Sailabala

Sundarpada, Bhubaneswar



Homes For Life

ARCHID BUILDERS

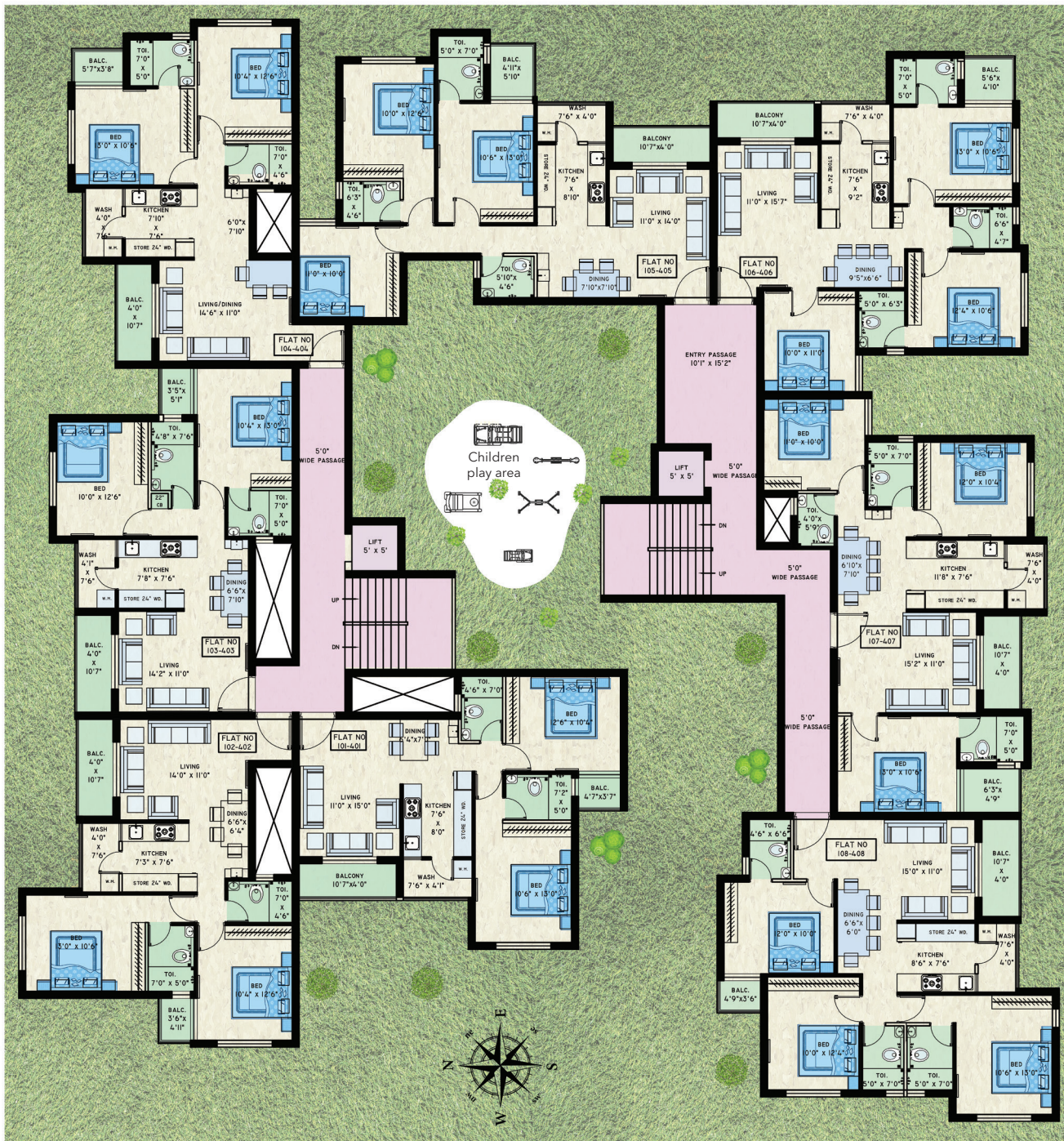


MASTER PLAN

Accommodates every comfort, mood, whim and fancy.

An apartment that expands beyond four walls to encompass an entire city. Built to uncompromising international standards, each apartment is an example of modern living at its finest. Amenities include:

- Children play area
- 24 X 7 water supply
- CCTV surveillance for main gate
- Power backup for all flats through Genset
- 24 X 7 security service
- automatic lift with ARD
- Intercom facility available



FLOOR PLAN



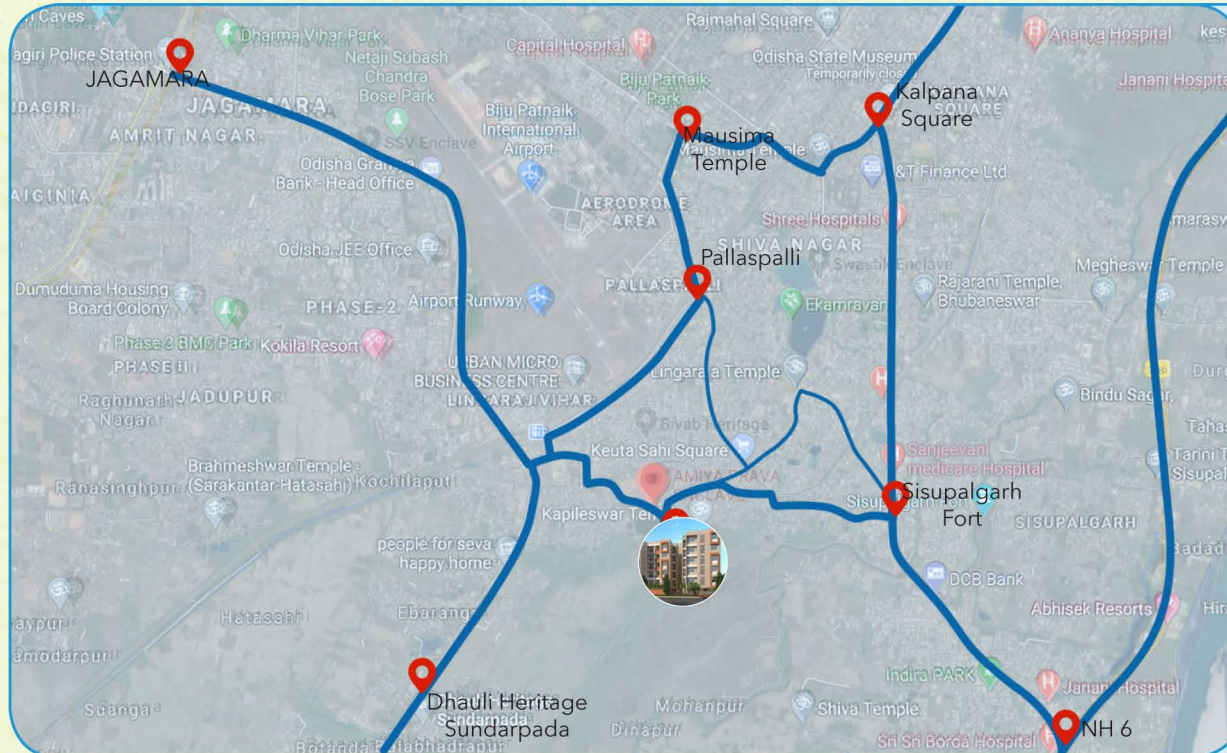
2 BHK



3 BHK

SPECIFICATIONS

- Structure:**
Earthquake resistant RCC Framed Structure.
- Flooring:**
Vitrified Tiles (2'*2') with Matching Skirting. Lobby ,corridors & lift facia are granite flooring, whereas the staircase are granite with stainless steel railing with plastic paint.
- Kitchen:**
Vitrified tiles (2'*2') & granite counter, stainless steel sink & Cp Fittings. Wall fittings with Ceramic tiles upto 2' height.
- Doors:**
All doors are panelled flush doors with Premium laminate & premium hardware fittings.
- Windows:**
All windows are Upvc.
- Lighting:**
Premium modular switches & sockets.
- Toilets:**
Ceramic matte finish tiles for floor & designer ceramic tiles upto door level for walls.
- Paints**
Putty with plastic paint & outside weather proof paints.



Nearby Areas

- DAV School (Pokhariput):- 1.4 kms
- Lingaraj PH : 1.3 kms
- Biju Pattnaik Airport: 2.5 kms
- Ekamra College: 670m